



Corttex®

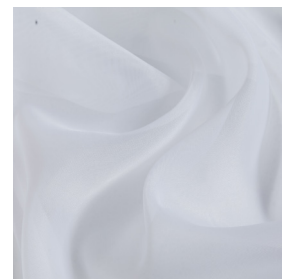
Catálogo *Tecidos*



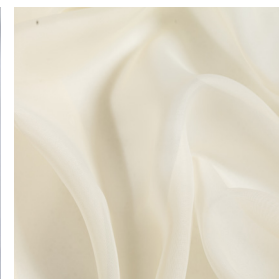
# Voil Liso

DESIGN EXCLUSIVO • ACABAMENTO SOFISTICADO • APARÊNCIA MARCANTE

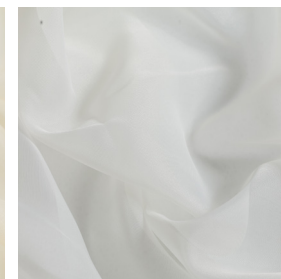
**Corttex®**



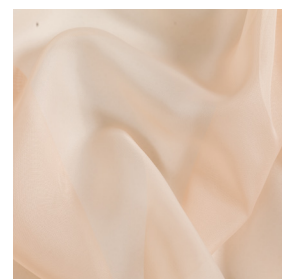
01-BRANCO



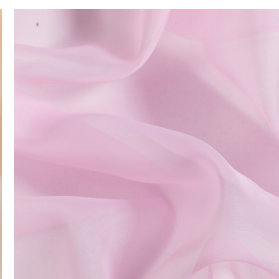
06-SALMÃO



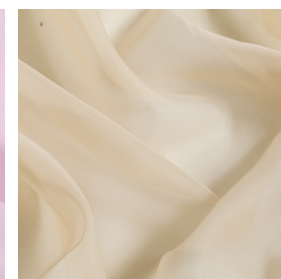
09-MARFIM



13-SALMÃO II



15-ROSA III



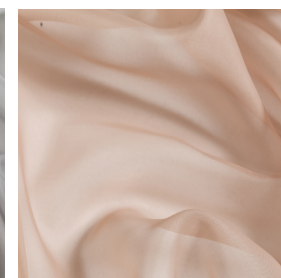
18-CHA



20-AMARELO



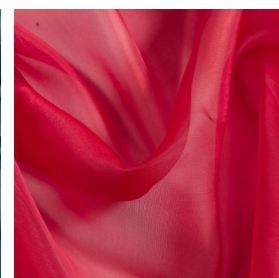
22-PRATA



23-BEGE II



34-ROYAL



42-VERMELHO



45-PRETO

## INFORMAÇÕES

**ORDEM 1098**

### COMPOSIÇÃO

100% Poliéster

### LARGURA

3,00 m

### GRAMATURA

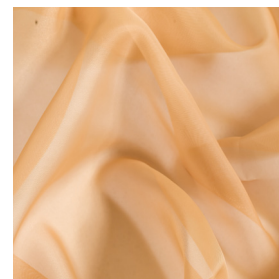
45~47 m<sup>2</sup>



# Voil Liso

DESIGN EXCLUSIVO • ACABAMENTO SOFISTICADO • APARÊNCIA MARCANTE

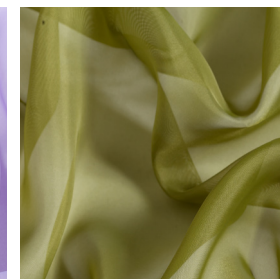
**Corttex®**



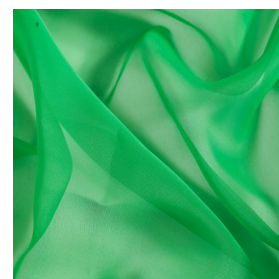
47-MOSTARDA



60-LILÁS



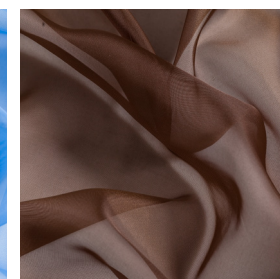
65-VERDE



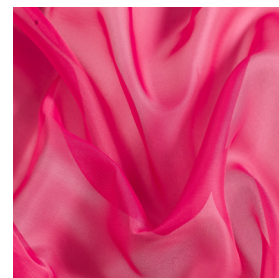
68-VERDE BANDEIRA



70-AZUL



72-MARROM



97-PINK



96-GRAFITE

## INFORMAÇÕES

**ORDEM 1098**

### COMPOSIÇÃO

100% Poliéster

### LARGURA

3,00 m

### GRAMATURA

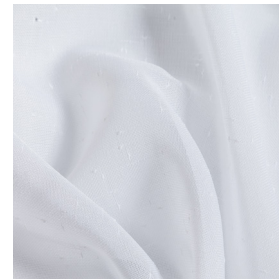
45~47 m<sup>2</sup>



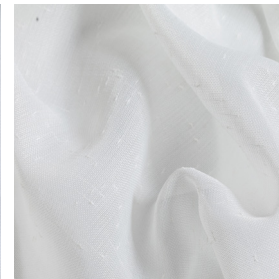
# Linen Look

DESIGN EXCLUSIVO • ACABAMENTO SOFISTICADO • APARÊNCIA MARCANTE

**Corttex®**



01-BRANCO



09-MARFIM



22-PRATA



96-GRAFITE

## INFORMAÇÕES

**ORDEM 1157**

**COMPOSIÇÃO**  
100% Poliéster

**LARGURA**  
2,80 m

**GRAMATURA**  
113 m<sup>2</sup>



# Linen Look

DESIGN EXCLUSIVO • ACABAMENTO SOFISTICADO • APARÊNCIA MARCANTE

**Corttex®**



**01-BRANCO**

## INFORMAÇÕES

**ORDEM 2948**

### COMPOSIÇÃO

91,64% Poliéster

8,36% Linho

### LARGURA

3,00 m

### GRAMATURA

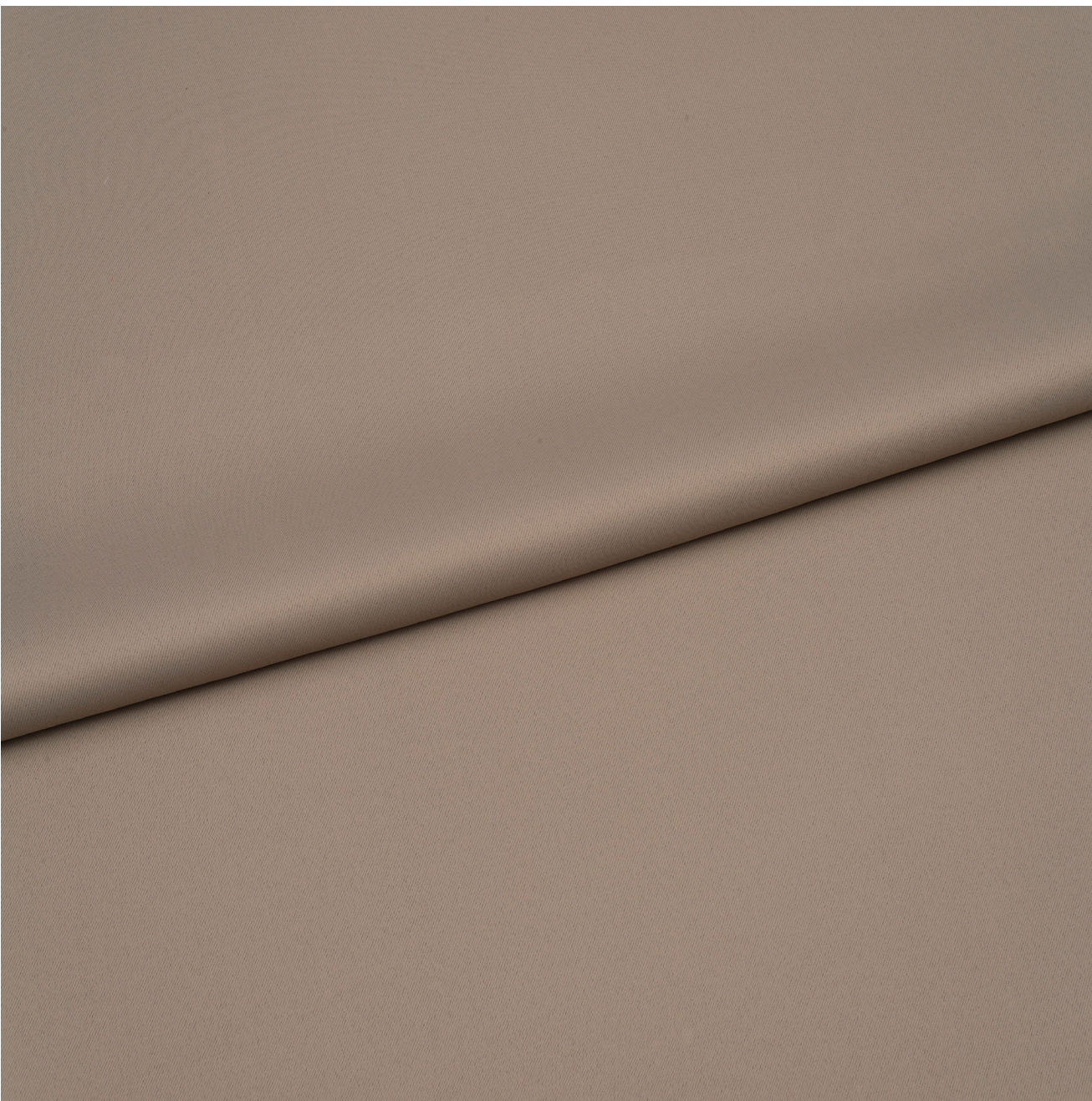
170 m<sup>2</sup>



# Semi Blackout liso

ACABAMENTO SOFISTICADO • APARÊNCIA MARCANTE

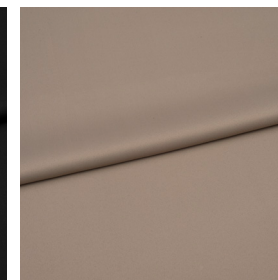
**Corttex®**



22-PRATA



45-PRETO



02-RATO

## INFORMAÇÕES

**ORDEM 1546**

### COMPOSIÇÃO

100% Poliéster

### LARGURA

2,80 m

### GRAMATURA

200 m<sup>2</sup>



# Voil Xadrez

DESIGN EXCLUSIVO • ACABAMENTO SOFISTICADO • APARÊNCIA MARCANTE

**Corttex®**



01-BRANCO



09-MARFIM



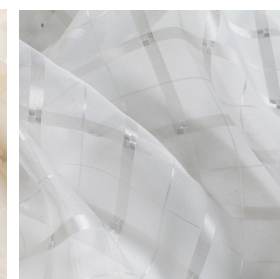
13-SALMÃO II



15-ROSA III



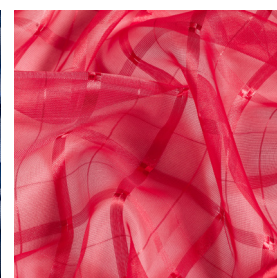
18-CHA



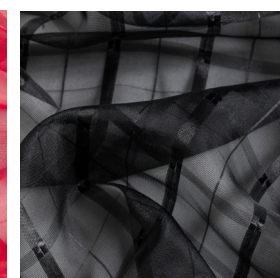
22-PRATA



30-AZUL MARINHO



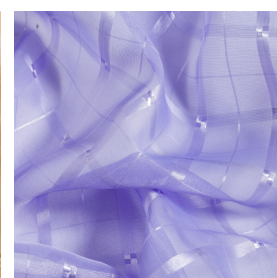
42-VERMELHO



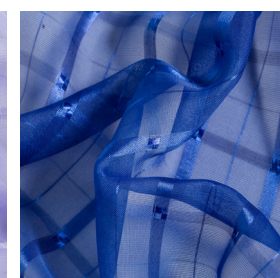
45-PRETO



47-MOSTARDA



60-LILAS



69-ROYAL

## INFORMAÇÕES

**ORDEM 1611**

### COMPOSIÇÃO

100% Poliéster

### LARGURA

3,00 m

### GRAMATURA

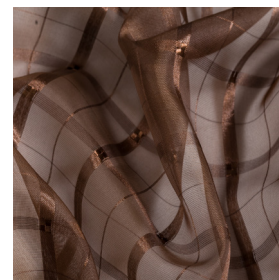
45~48 m<sup>2</sup>



# Voil Xadrez

DESIGN EXCLUSIVO • ACABAMENTO SOFISTICADO • APARÊNCIA MARCANTE

**Corttex®**



72-MARROM



96-TURQUESA

## INFORMAÇÕES

**ORDEM 1611**

### COMPOSIÇÃO

100% Poliéster

### LARGURA

3,00 m

### GRAMATURA

45~48 m<sup>2</sup>



# Voil Suiço

DESIGN EXCLUSIVO • ACABAMENTO SOFISTICADO • APARÊNCIA MARCANTE

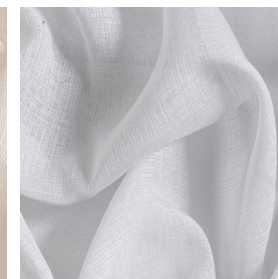
**Corttex®**



**01-BRANCO**



**02-BEGE**



**22-PRATA**



**96-GRAFITE**

## INFORMAÇÕES

**ORDEM 1648**

### COMPOSIÇÃO

100% Poliéster

### LARGURA

3,00 m

### GRAMATURA

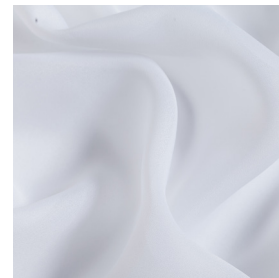
56~58 m<sup>2</sup>



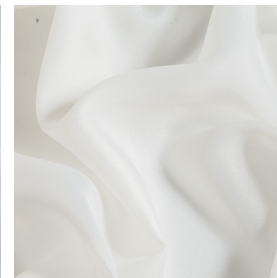
# Voil Cristal

DESIGN EXCLUSIVO • ACABAMENTO SOFISTICADO • APARÊNCIA MARCANTE

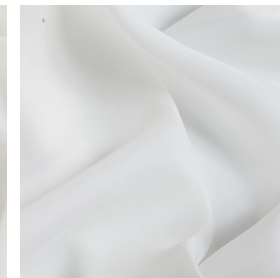
**Corttex®**



**01-BRANCO**



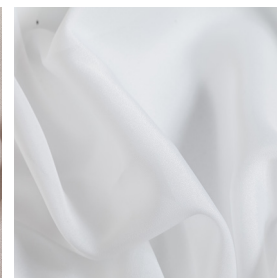
**09-MARFIM**



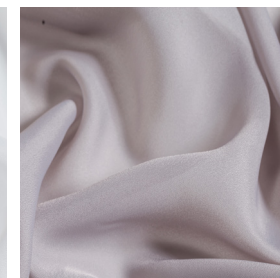
**48-MARFIM II**



**49-BEGE**



**51-NATURAL**



**52-CINZA**

## INFORMAÇÕES

**ORDEM 1662**

### COMPOSIÇÃO

100% Poliéster

### LARGURA

2,80 m

### GRAMATURA

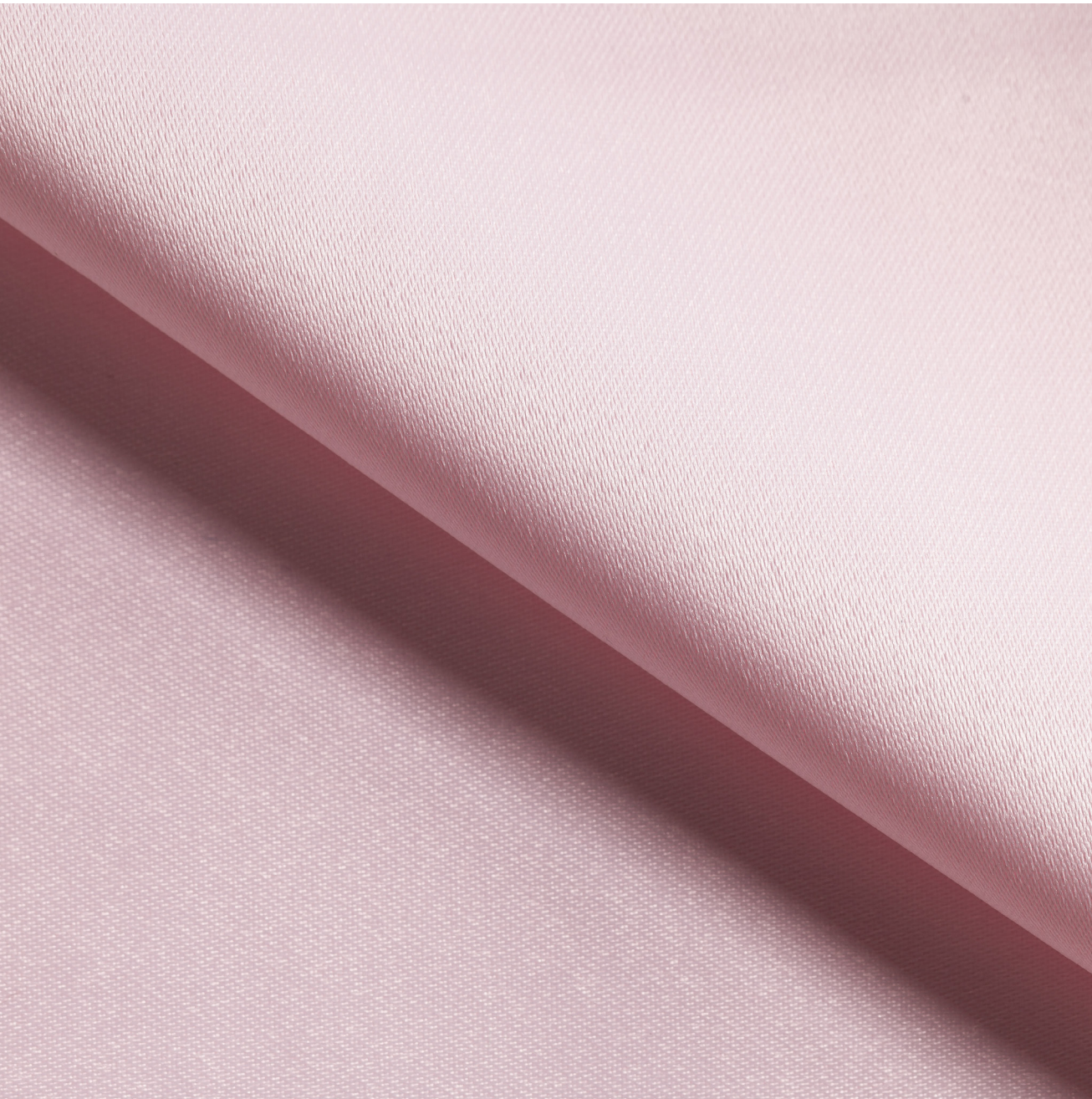
113 m<sup>2</sup>



# Cetim

DESIGN EXCLUSIVO • ACABAMENTO SOFISTICADO • APARÊNCIA MARCANTE

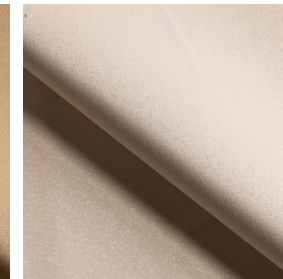
## Corttex®



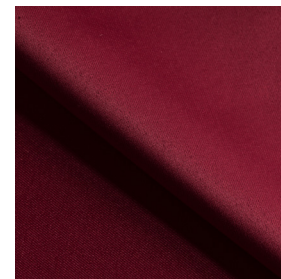
01-BRANCO



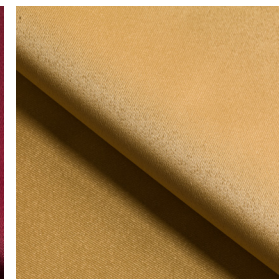
02-BEGE



04-PALHA



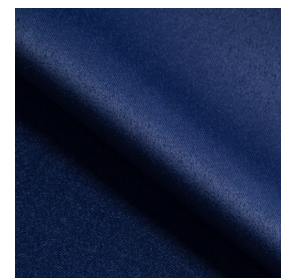
12-VINHO



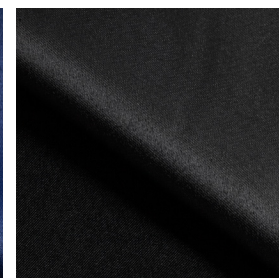
25-OURO



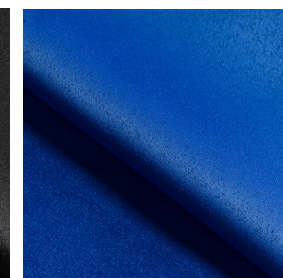
28-PÉROLA



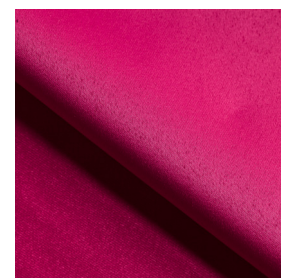
30-AZUL MARINHO



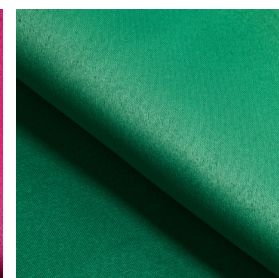
63-PRETO



64-ROYAL ESCURO



67-PINK



68-VERDE BANDERIA



69-AMARELO BANDEIRA

### INFORMAÇÕES

**ORDEM 1778**

#### COMPOSIÇÃO

100% Poliéster

#### LARGURA

3,00 m

#### GRAMATURA

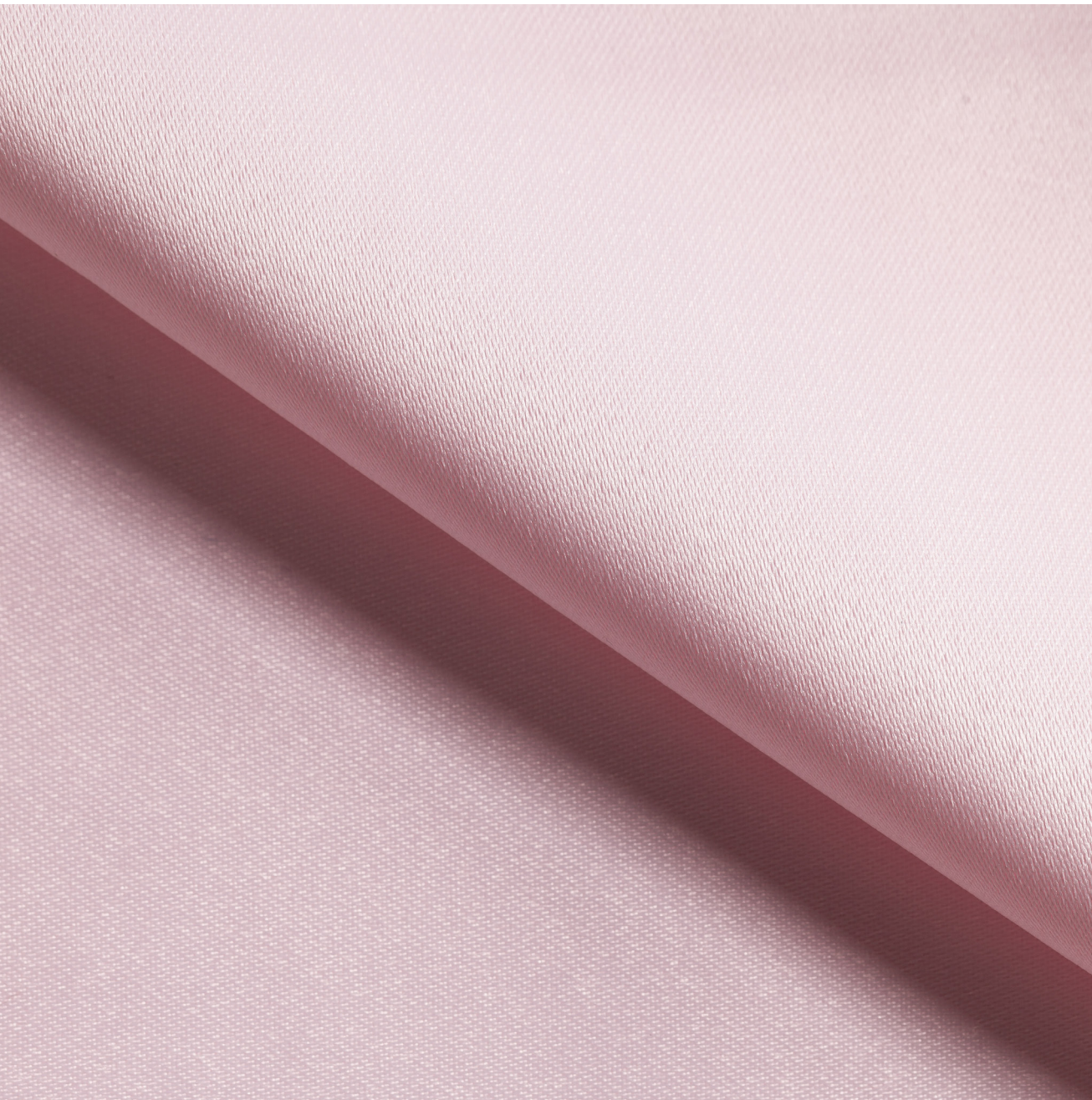
106 m<sup>2</sup>



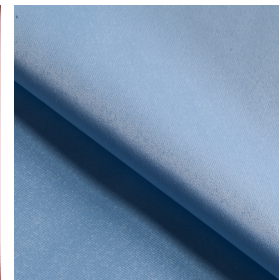
# Cetim

DESIGN EXCLUSIVO • ACABAMENTO SOFISTICADO • APARÊNCIA MARCANTE

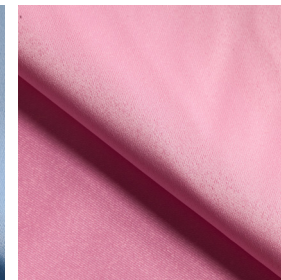
**Corttex®**



70-ROSA BEBÊ



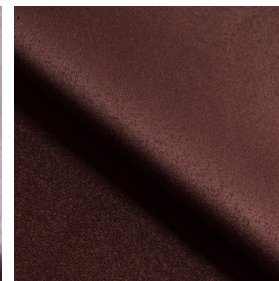
71-AZUL BEBÊ



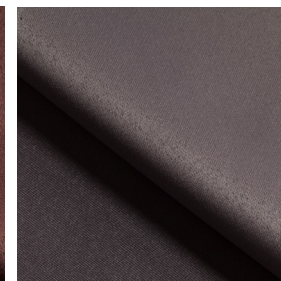
79-ROSA III



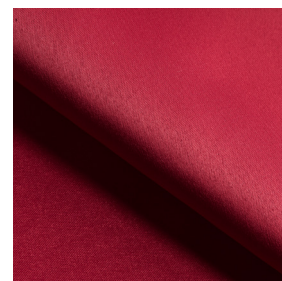
81-PRATA



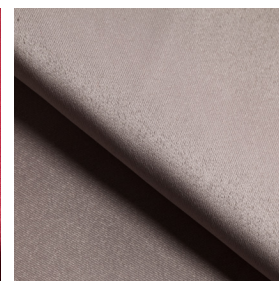
83-CHOCOLATE



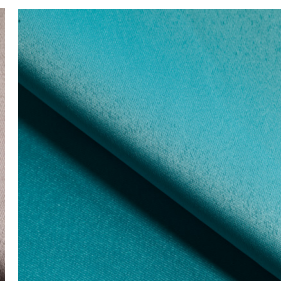
84-CINZA



86-VERMELHO II



87-FENDI



88-TIFANNY

## INFORMAÇÕES

**ORDEM 1778**

**COMPOSIÇÃO**  
100% Poliéster

**LARGURA**  
3,00 m

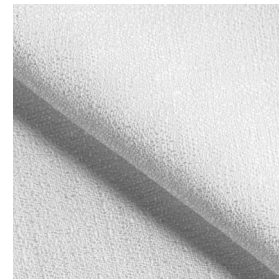
**GRAMATURA**  
106 m<sup>2</sup>



# Rústico

DESIGN EXCLUSIVO • ACABAMENTO SOFISTICADO • APARÊNCIA MARCANTE

**Corttex®**



01-BRANCO



02-BEGE



03-FUNGHI



05-TAUPE



22-PRATA

## INFORMAÇÕES

**ORDEM 2619**

**COMPOSIÇÃO**  
100% Poliéster

**LARGURA**  
3,00 m

**GRAMATURA**  
158 m<sup>2</sup>



# Rústico

DESIGN EXCLUSIVO • ACABAMENTO SOFISTICADO • APARÊNCIA MARCANTE

**Corttex®**



**01-CINZA CLARO**



**03-BRANCO**



**22-PRATA**



**35-CRU**



**96-GRAFITE**

## INFORMAÇÕES

**ORDEM 2853**

### COMPOSIÇÃO

100% Poliéster

### LARGURA

3,00 m

### GRAMATURA

190 m<sup>2</sup>



# Oxford Liso

DESIGN EXCLUSIVO • ACABAMENTO SOFISTICADO • APARÊNCIA MARCANTE

**Corttex®**



01-BRANCO



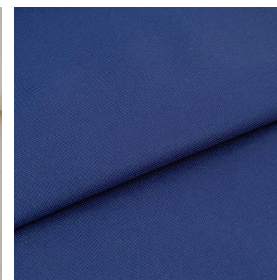
02-BEGE



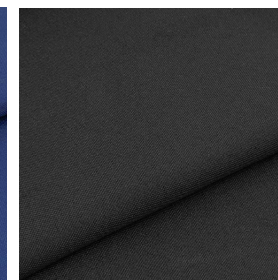
04-PALHA



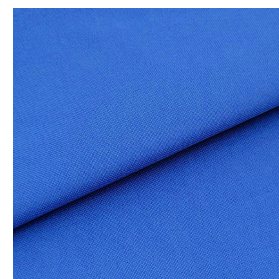
28-PÉROLA



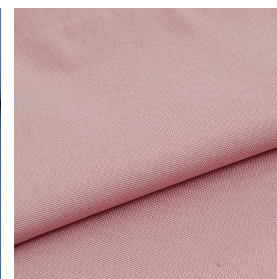
30-AZUL MARINHO



63-PRETO



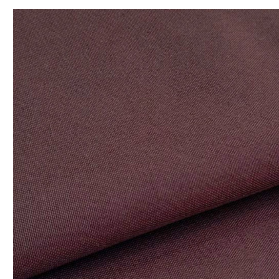
64-ROYAL ESCURO



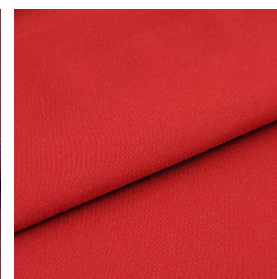
79-ROSE



81-PRATA



83-CHOCOLATE



86-VERMELHO

## INFORMAÇÕES

**ORDEM 2657**

### COMPOSIÇÃO

100% Poliéster

### LARGURA

3,00 m

### GRAMATURA

140 m<sup>2</sup>



# Jacquard

DESIGN EXCLUSIVO • ACABAMENTO SOFISTICADO • APARÊNCIA MARCANTE

**Corttex®**



01-BRANCO



04-PALHA



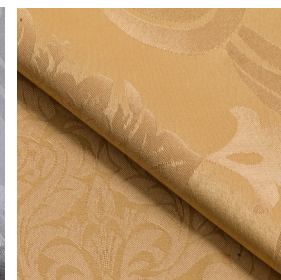
05-MARROM CLARO



11-MARROM II



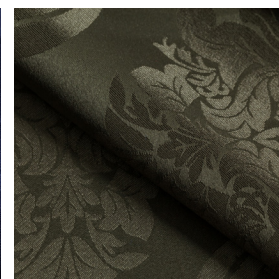
22-PRATA



25-OURO



30-AZUL MARINHO



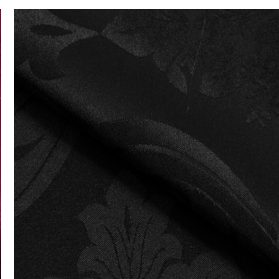
33-VERDE OLIVA



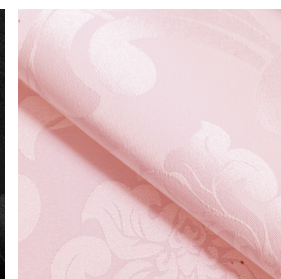
34-ROYAL



35-BORDO



45-PRETO



80-ROSA VELHO

## INFORMAÇÕES

**ORDEM 2684**

### COMPOSIÇÃO

100% Poliéster

### LARGURA

2,80 m

### GRAMATURA

150 m<sup>2</sup>



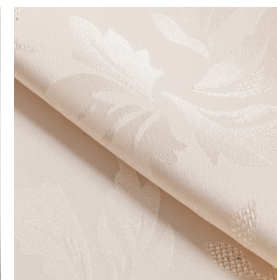
# Jacquard

DESIGN EXCLUSIVO • ACABAMENTO SOFISTICADO • APARÊNCIA MARCANTE

**Corttex®**



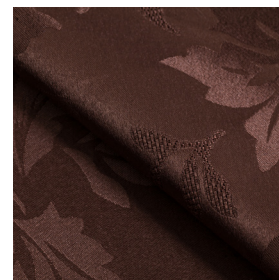
01-BRANCO



04-PALHA



05-MARROM CLARO



11-MARROM II



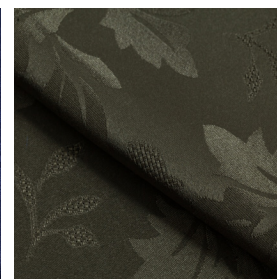
22-PRATA



25-OURO



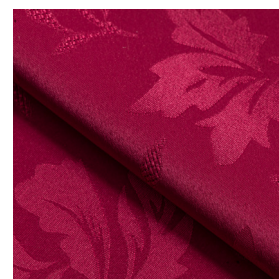
30-AZUL MARINHO



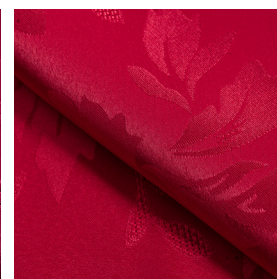
33-VERDE OLIVA



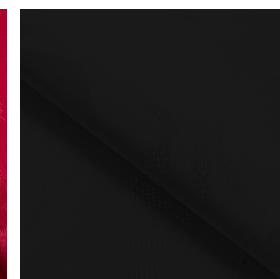
34-ROYAL ESCURO



35-BORDO



62-VERMELHO



45-PRETO

## INFORMAÇÕES

**ORDEM 2853**

### COMPOSIÇÃO

100% Poliéster

### LARGURA

2,80 m

### GRAMATURA

150 m<sup>2</sup>



# Jacquard

DESIGN EXCLUSIVO • ACABAMENTO SOFISTICADO • APARÊNCIA MARCANTE

**Corttex®**



**80-ROSA VELHO**

## INFORMAÇÕES

**ORDEM 2853**

### COMPOSIÇÃO

100% Poliéster

### LARGURA

2,80 m

### GRAMATURA

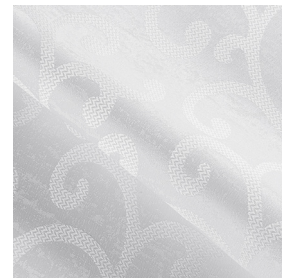
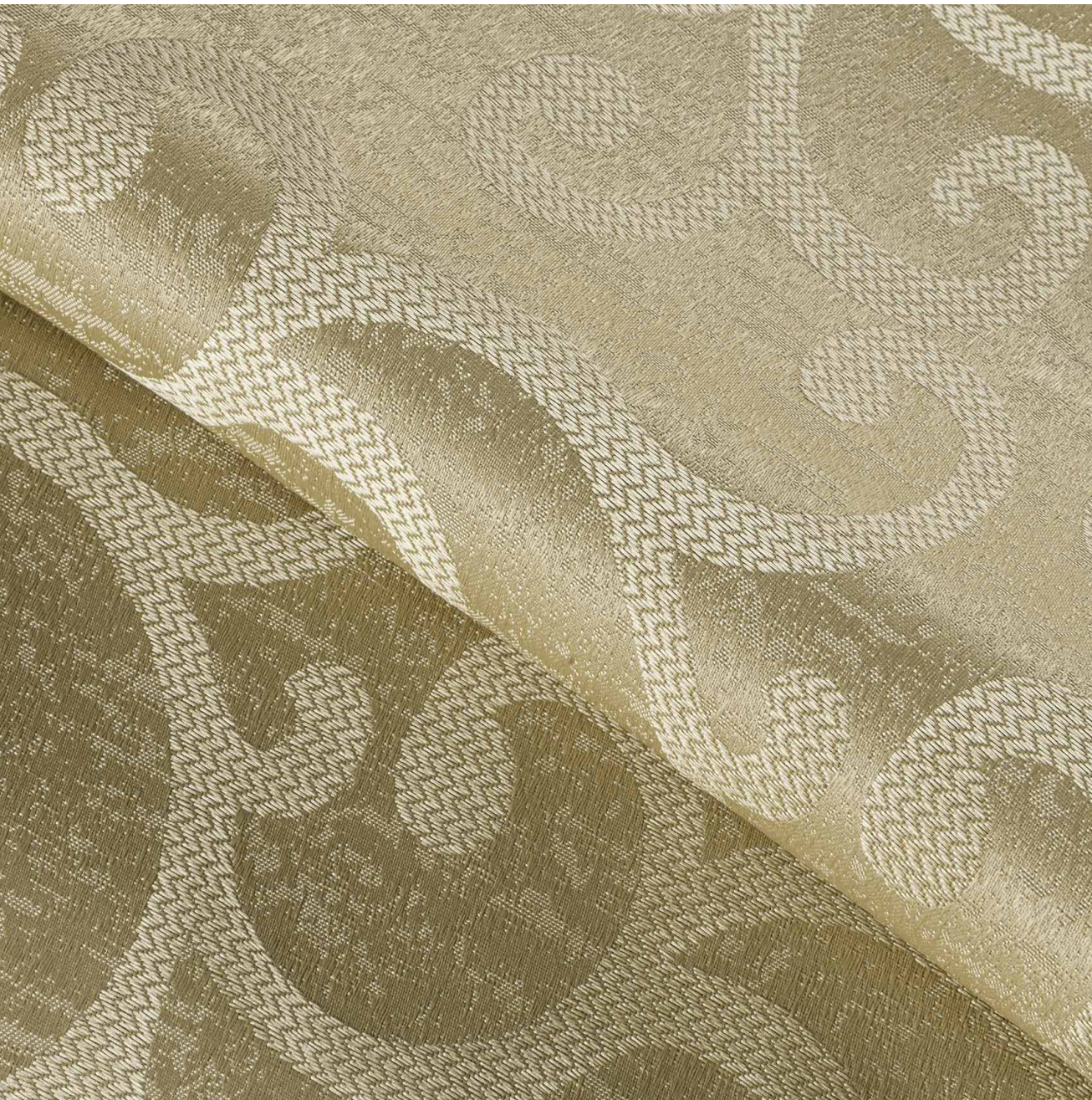
150 m<sup>2</sup>



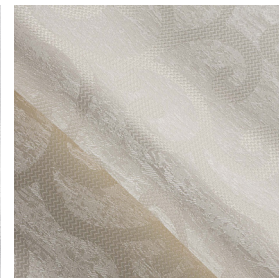
# Jacquard

DESIGN EXCLUSIVO • ACABAMENTO SOFISTICADO • APARÊNCIA MARCANTE

**Cortex®**



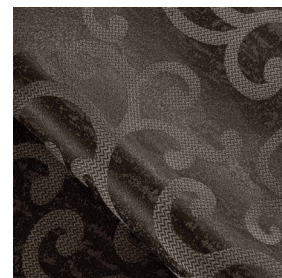
01-BRANCO



04-PALHA



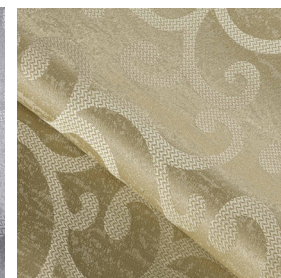
05-MARROM CLARO



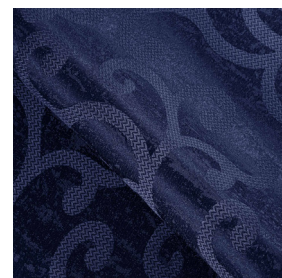
11-MARROM II



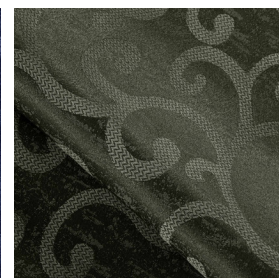
22-PRATA



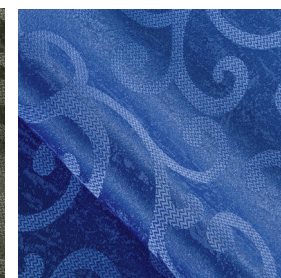
25-OURO



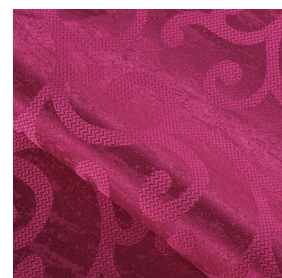
30-AZUL MARINHO



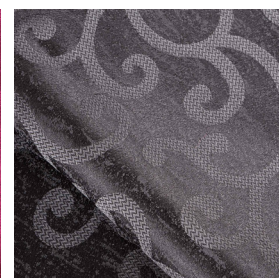
33-VERDE OLIVA



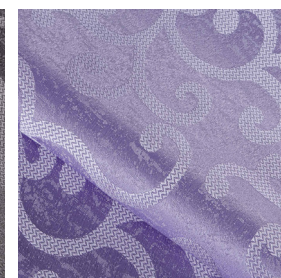
34-ROYAL



35-BORDO



45-PRETO



60-LILÁS

## INFORMAÇÕES

**ORDEM 3084**

### COMPOSIÇÃO

100% Poliéster

### LARGURA

2,80 m

### GRAMATURA

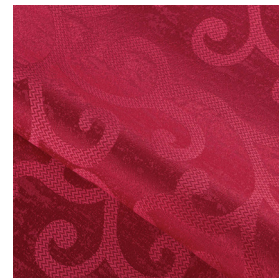
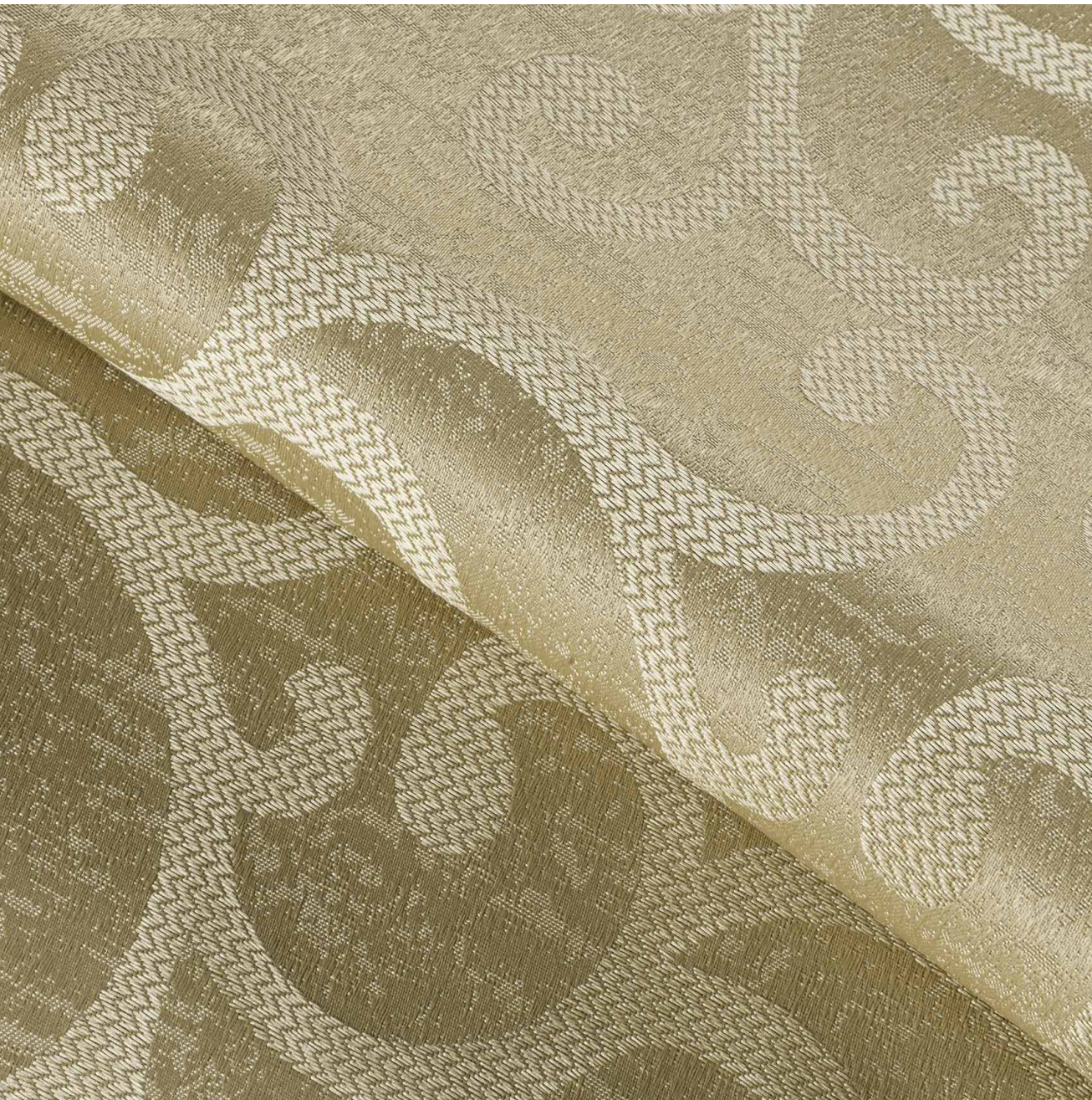
150 m<sup>2</sup>



# Jacquard

DESIGN EXCLUSIVO • ACABAMENTO SOFISTICADO • APARÊNCIA MARCANTE

**Corttex®**



**62-VERMELHO**



**80-ROSA VELHO**

## INFORMAÇÕES

**ORDEM 3084**

### COMPOSIÇÃO

100% Poliéster

### LARGURA

2,80 m

### GRAMATURA

150 m<sup>2</sup>



# Voil Linho

DESIGN EXCLUSIVO • ACABAMENTO SOFISTICADO • APARÊNCIA MARCANTE

**Corttex®**



**35-BRANCO**

## INFORMAÇÕES

**ORDEM 1778**

### COMPOSIÇÃO

94,16% Poliéster

5,84% Linho

### LARGURA

3,00 m

### GRAMATURA

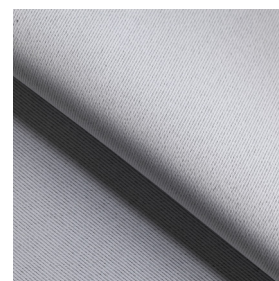
119 m<sup>2</sup>



# Voil Linho

DESIGN EXCLUSIVO • ACABAMENTO SOFISTICADO • APARÊNCIA MARCANTE

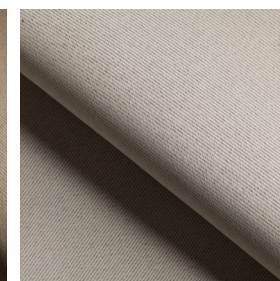
**Corttex®**



01-BRANCO



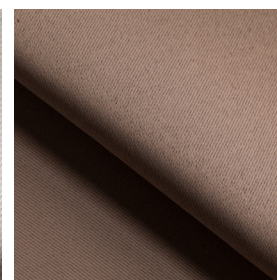
04-PALHA



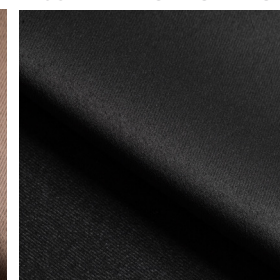
05-MARROM CLARO



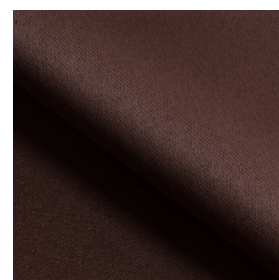
11-MARROM II



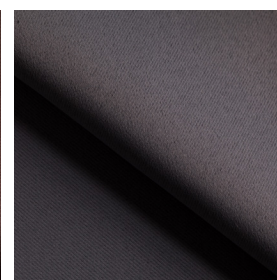
22-PRATA



25-OURO



30-AZUL MARINHO



33-VERDE OLIVA

## INFORMAÇÕES

**ORDEM 2869**

### COMPOSIÇÃO

90,6% Poliéster

9,4% Linho

### LARGURA

3,00 m

### GRAMATURA

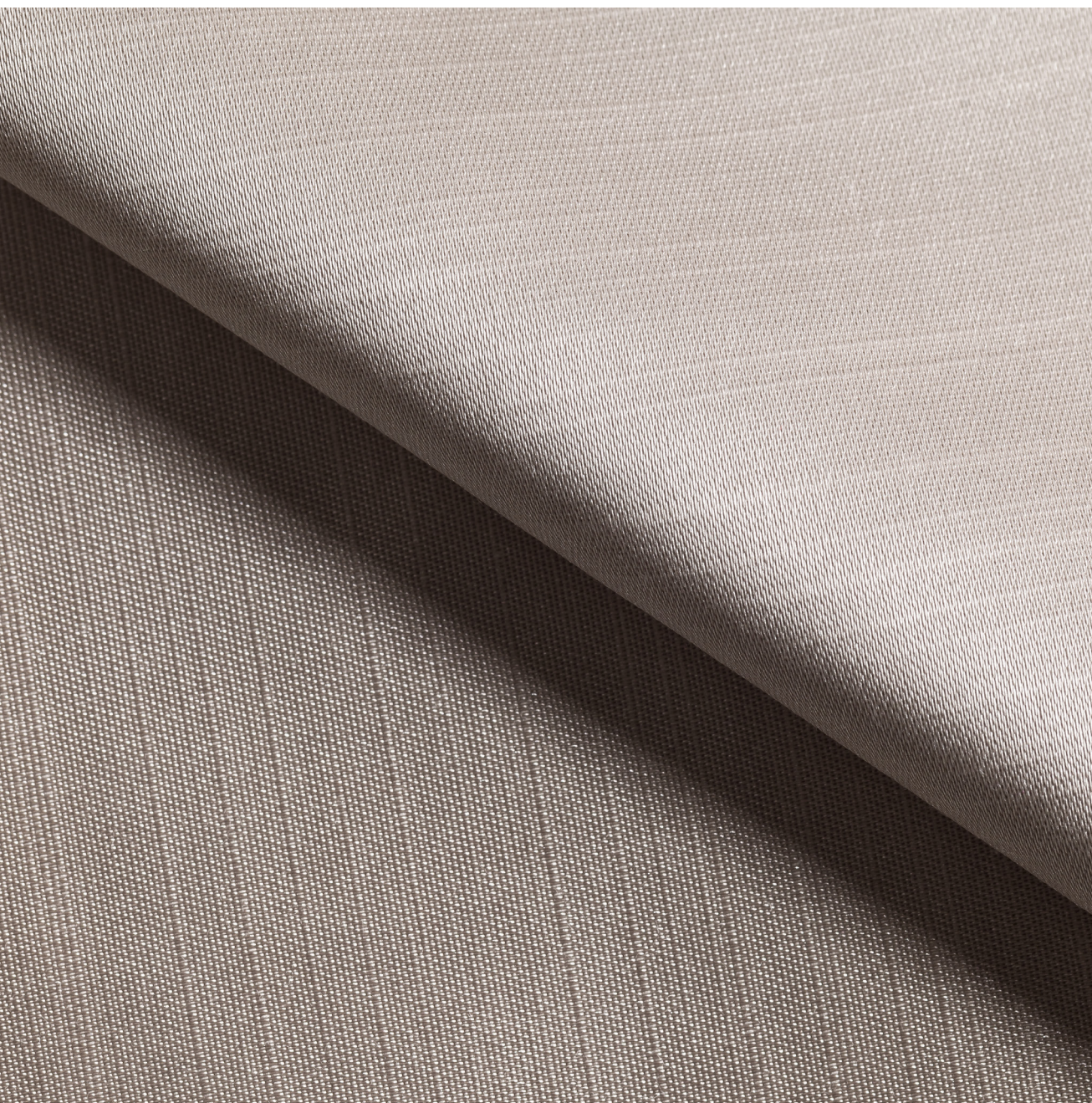
120 m<sup>2</sup>



# Shantung

DESIGN EXCLUSIVO • ACABAMENTO SOFISTICADO • APARÊNCIA MARCANTE

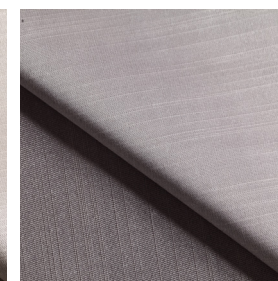
**Corttex®**



01-BRANCO



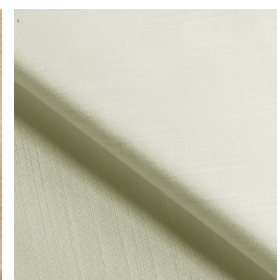
02-BEGE



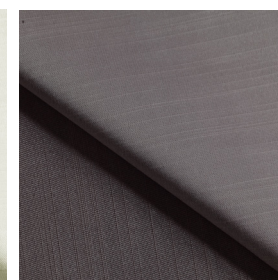
22-PRATA



23-BEGE II



28-PÉROLA



96-GRAFITE

## INFORMAÇÕES

**ORDEM 2703**

### COMPOSIÇÃO

100% Poliéster

### LARGURA

3,00 m

### GRAMATURA

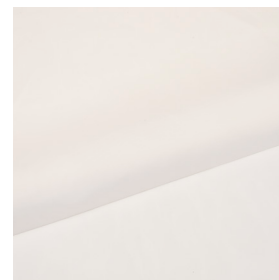
200 m<sup>2</sup>



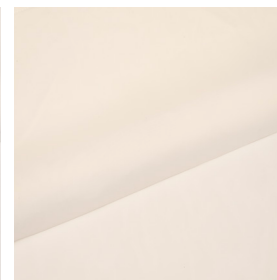
# Voil Super

DESIGN EXCLUSIVO • ACABAMENTO SOFISTICADO • APARÊNCIA MARCANTE

**Corttex®**



**01-BRANCO**



**09-MARFIM**

## INFORMAÇÕES

**ORDEM 2711**

### COMPOSIÇÃO

100% Poliéster

### LARGURA

3,00 m

### GRAMATURA

63 m<sup>2</sup>



# Voil Shantung

DESIGN EXCLUSIVO • ACABAMENTO SOFISTICADO • APARÊNCIA MARCANTE

**Corttex®**



**01-BRANCO**

## INFORMAÇÕES

**ORDEM 2712**

### COMPOSIÇÃO

87,39% Poliéster

12,61% Linho

### LARGURA

3,00 m

### GRAMATURA

96 m<sup>2</sup>



# Voil Fantasia

DESIGN EXCLUSIVO • ACABAMENTO SOFISTICADO • APARÊNCIA MARCANTE

**Corttex®**



**01-BRANCO**



**09-MARFIM**

## INFORMAÇÕES

**ORDEM 2715**

### COMPOSIÇÃO

100% Poliéster

### LARGURA

3,00 m

### GRAMATURA

52~64 m<sup>2</sup>



# Voil Fantasia

DESIGN EXCLUSIVO • ACABAMENTO SOFISTICADO • APARÊNCIA MARCANTE

**Corttex®**



**01-BRANCO**



**09-MARFIM**

## INFORMAÇÕES

**ORDEM 2716**

### COMPOSIÇÃO

100% Poliéster

### LARGURA

3,00 m

### GRAMATURA

54 m<sup>2</sup>



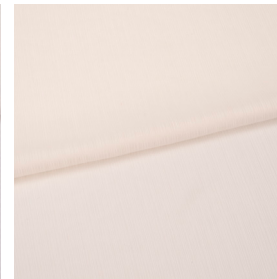
# Voil Selvagem

DESIGN EXCLUSIVO • ACABAMENTO SOFISTICADO • APARÊNCIA MARCANTE

**Corttex®**



**01-BRANCO**



**09-MARFIM**

## INFORMAÇÕES

**ORDEM 2717**

### COMPOSIÇÃO

100% Poliéster

### LARGURA

3,00 m

### GRAMATURA

70 m<sup>2</sup>



# Voil Flame

DESIGN EXCLUSIVO • ACABAMENTO SOFISTICADO • APARÊNCIA MARCANTE

**Corttex®**



01-BRANCO



02-BEGE



03-PRATA



09-MARFIM



96-GRAFITE

## INFORMAÇÕES

**ORDEM 2819**

### COMPOSIÇÃO

100% Poliéster

### LARGURA

3,00 m

### GRAMATURA

113 m<sup>2</sup>



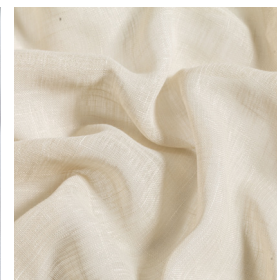
# Voil Flame

DESIGN EXCLUSIVO • ACABAMENTO SOFISTICADO • APARÊNCIA MARCANTE

**Corttex®**



**01-BRANCO**



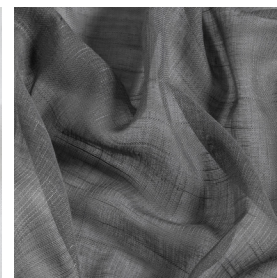
**02-BEGE**



**03-PRATA**



**11-MARFIM**



**96-GRAFITE**

## INFORMAÇÕES

**ORDEM 2852**

### COMPOSIÇÃO

100% Poliéster

### LARGURA

3,00 m

### GRAMATURA

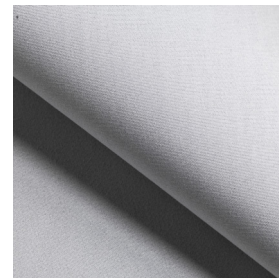
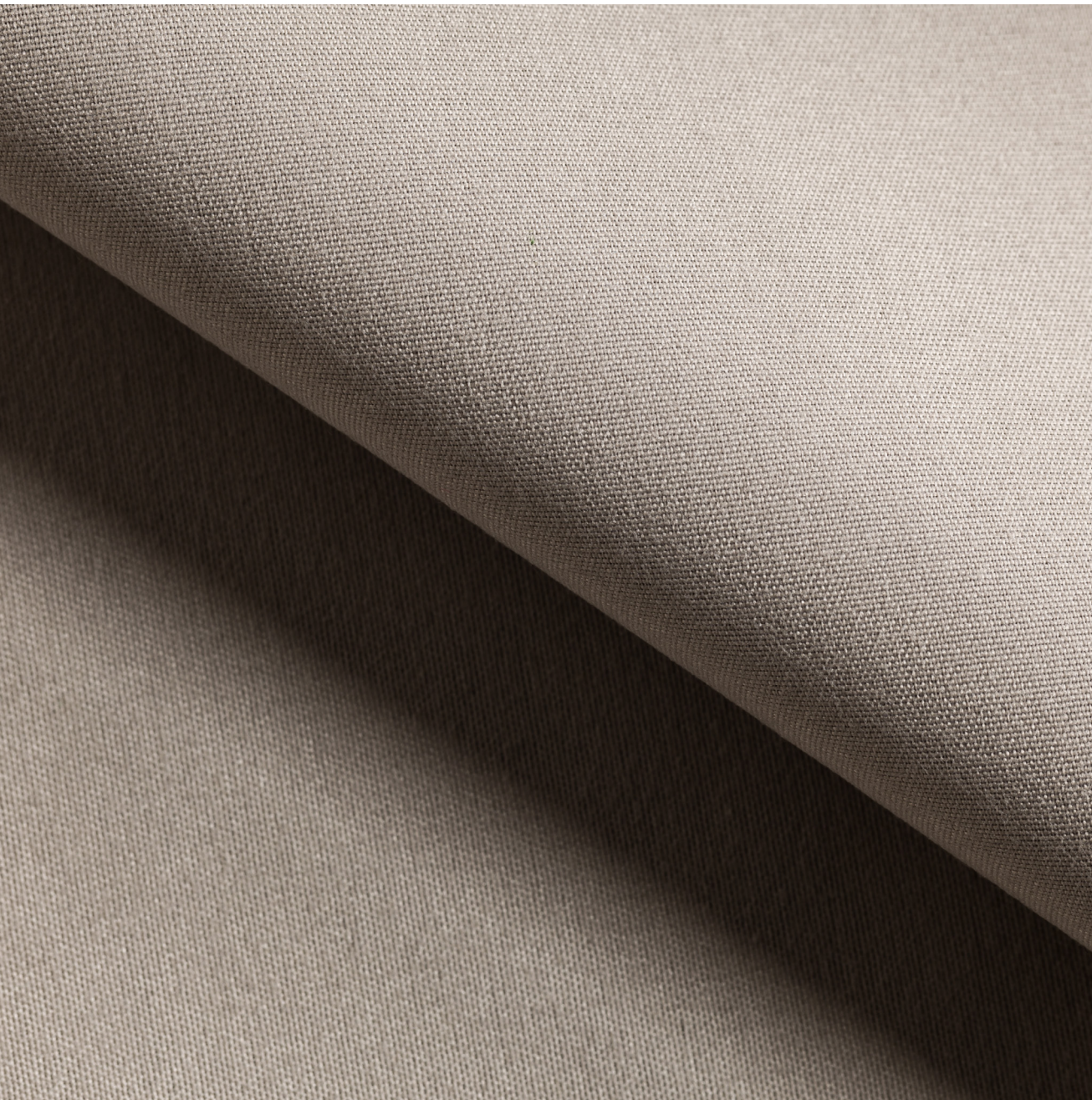
100 m<sup>2</sup>



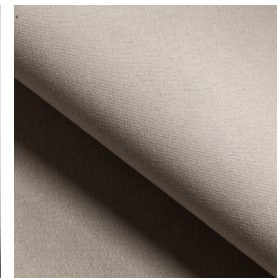
# Blackout 100%

DESIGN EXCLUSIVO • ACABAMENTO SOFISTICADO • APARÊNCIA MARCANTE

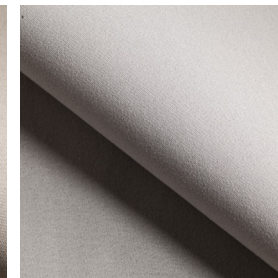
**Corttex®**



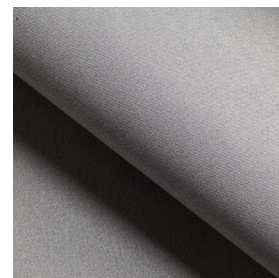
01-BRANCO



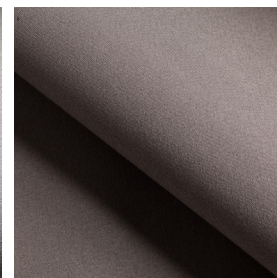
02-BEGE



03-PRATA



09-MARFIM



96-GRAFITE

## INFORMAÇÕES

**ORDEM 2849**

**COMPOSIÇÃO**  
100% Poliéster

**LARGURA**  
2,80 m

**GRAMATURA**  
186 m<sup>2</sup>



# Blackout 100%

DESIGN EXCLUSIVO • ACABAMENTO SOFISTICADO • APARÊNCIA MARCANTE

**Corttex®**



01-BRANCO



07-AVELÃ



09-MARFIM



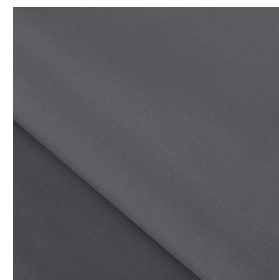
22-PRATA



45-PRETO



72-MARROM



96-GRAFITE

## INFORMAÇÕES

**ORDEM 3098**

**COMPOSIÇÃO**  
100% Poliéster

**LARGURA**  
2,80 m

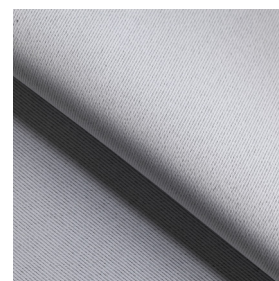
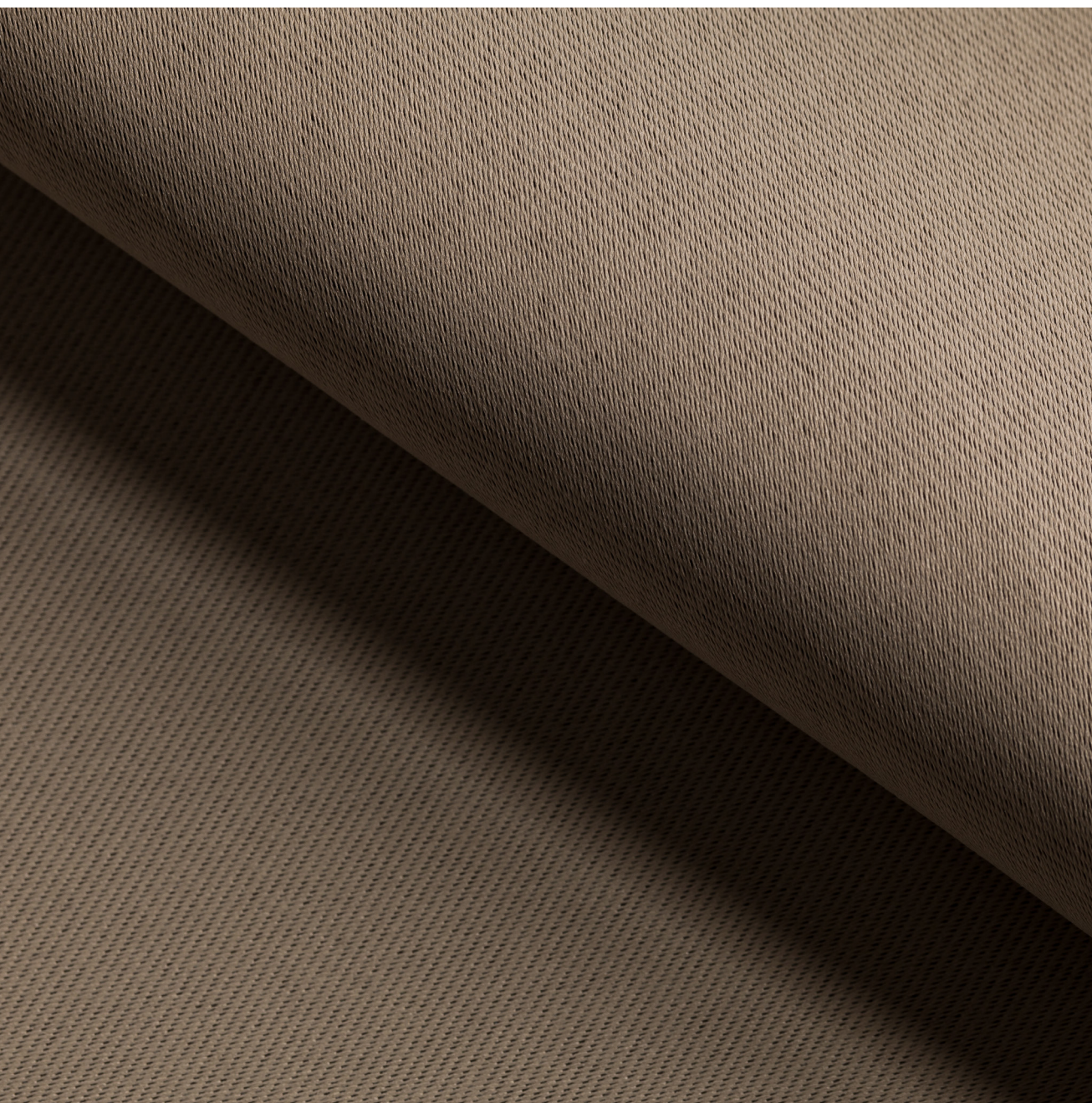
**GRAMATURA**  
108 m<sup>2</sup>



# Semi Blackout

DESIGN EXCLUSIVO • ACABAMENTO SOFISTICADO • APARÊNCIA MARCANTE

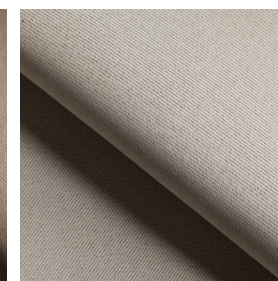
**Corttex®**



01-BRANCO



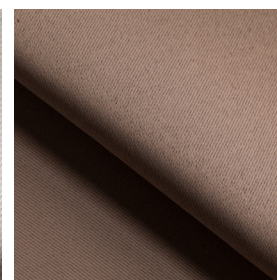
04-PALHA



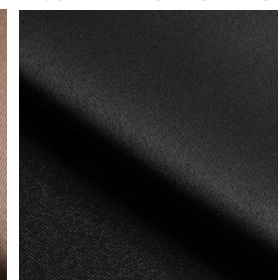
05-MARROM CLARO



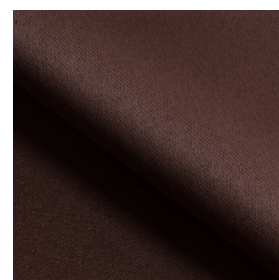
11-MARROM II



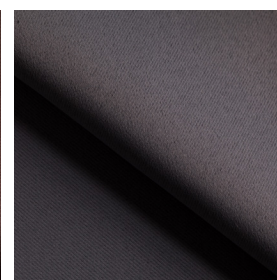
22-PRATA



25-OURO



30-AZUL MARINHO



33-VERDE OLIVA

## INFORMAÇÕES

**ORDEM 2855**

### COMPOSIÇÃO

100% Poliéster

### LARGURA

3,00 m

### GRAMATURA

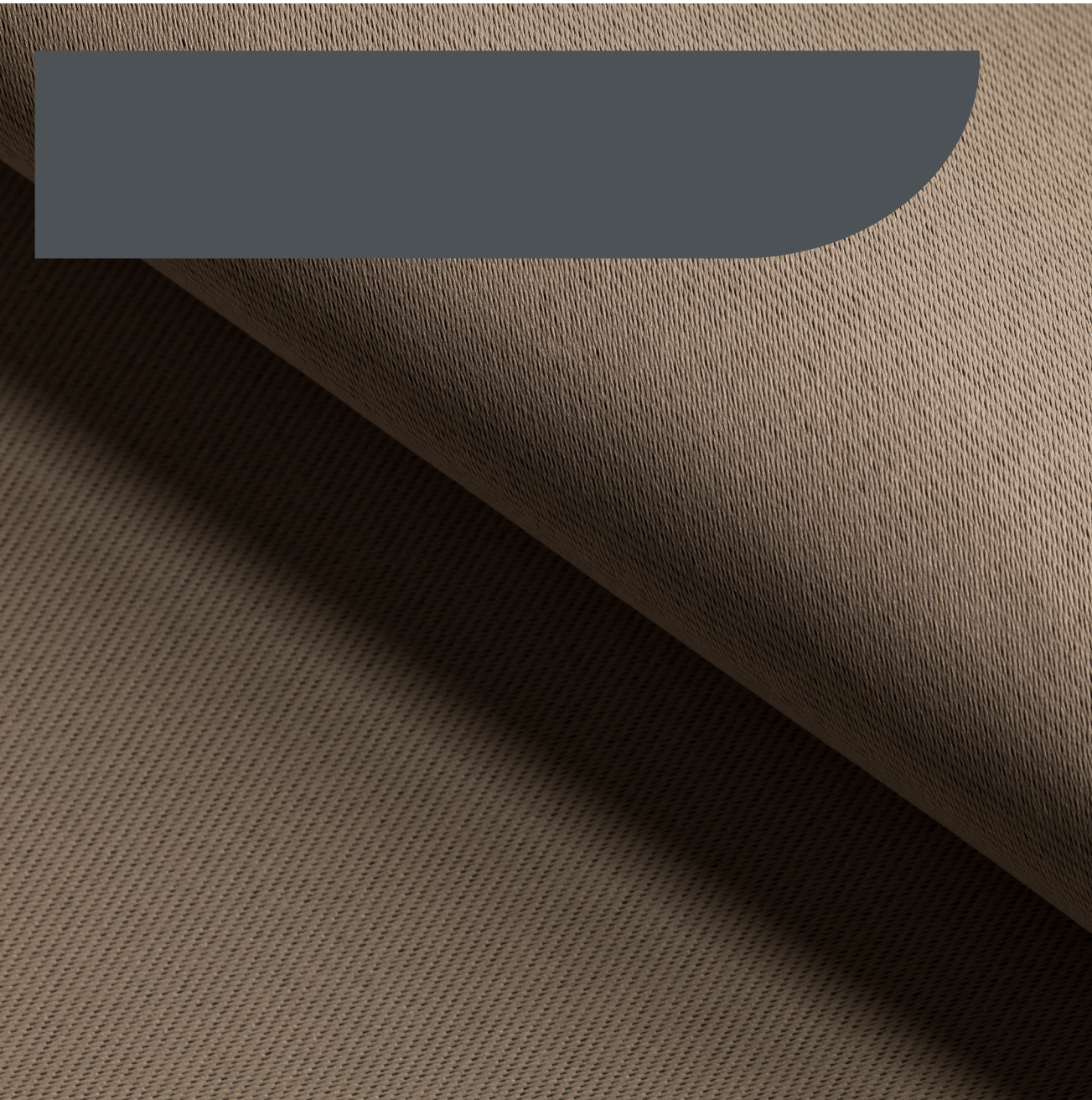
200 m<sup>2</sup>



# Blackout 100% Linho

ACABAMENTO SOFISTICADO • APARÊNCIA MARCANTE

**Corttex®**



02-BEGE



09-MARFIM



22-PRATA



23-BEGE II



57-CINZA

## INFORMAÇÕES

**ORDEM 2856**

**COMPOSIÇÃO**  
100% Poliéster

**LARGURA**  
2,80 m

**GRAMATURA**  
255 m<sup>2</sup>



# Natural look

DESIGN EXCLUSIVO • ACABAMENTO SOFISTICADO • APARÊNCIA MARCANTE

**Corttex®**



35-CRÚ

## INFORMAÇÕES

**ORDEM 2865**

### COMPOSIÇÃO

95% Poliéster

5% Linho

### LARGURA

3,00 m

### GRAMATURA

126 m<sup>2</sup>



# Natural look

DESIGN EXCLUSIVO • ACABAMENTO SOFISTICADO • APARÊNCIA MARCANTE

**Corttex®**



**35-CRÚ**

## INFORMAÇÕES

**ORDEM 2866**

### COMPOSIÇÃO

85% Poliéster

15% Linho

### LARGURA

3,00 m

### GRAMATURA

100 m<sup>2</sup>



# Natural look

DESIGN EXCLUSIVO • ACABAMENTO SOFISTICADO • APARÊNCIA MARCANTE

**Corttex®**



**35-CRÚ**

## INFORMAÇÕES

**ORDEM 2867**

### COMPOSIÇÃO

95% Poliéster

5% Linho

### LARGURA

3,00 m

### GRAMATURA

100 m<sup>2</sup>



# Natural look

DESIGN EXCLUSIVO • ACABAMENTO SOFISTICADO • APARÊNCIA MARCANTE

**Corttex®**



**35-CRÚ**

## INFORMAÇÕES

**ORDEM 2868**

### COMPOSIÇÃO

94% Poliéster

6% Linho

### LARGURA

3,00 m

### GRAMATURA

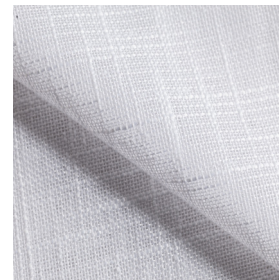
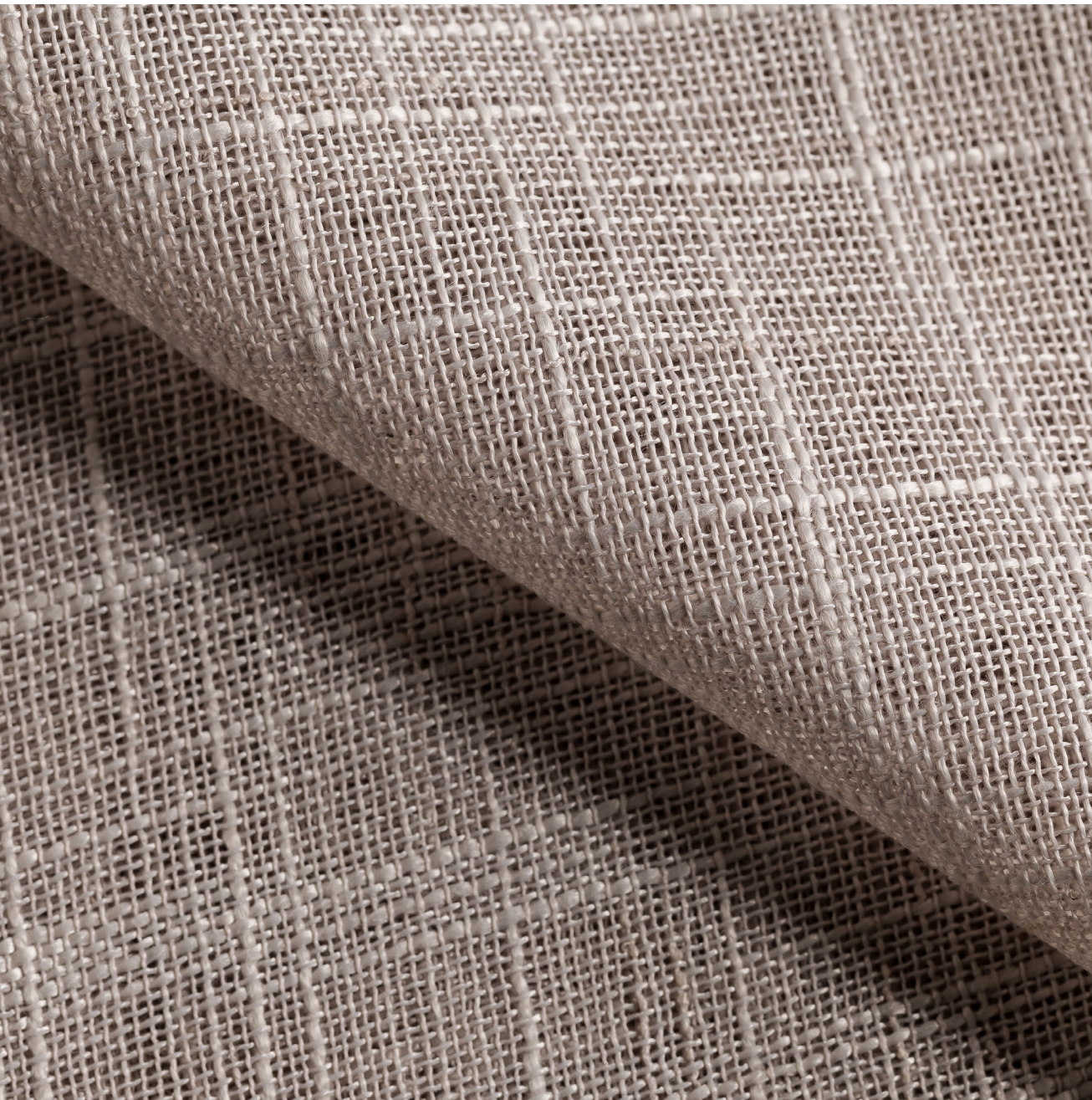
210 m<sup>2</sup>



# Roma

DESIGN EXCLUSIVO • ACABAMENTO SOFISTICADO • APARÊNCIA MARCANTE

**Corttex®**



01-BRANCO



04-PALHA



05-MARROM CLARO



11-MARROM II



22-PRATA



25-OURO

## INFORMAÇÕES

**ORDEM 2870**

### COMPOSIÇÃO

100% Poliéster

### LARGURA

3,00 m

### GRAMATURA

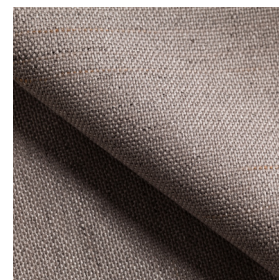
190 m<sup>2</sup>



# Semi Blackout Linho

ACABAMENTO SOFISTICADO • APARÊNCIA MARCANTE

**Corttex®**



01-BRANCO



09-MARFIM



22-PRATA

## INFORMAÇÕES

**ORDEM 2929**

### COMPOSIÇÃO

100% Poliéster

### LARGURA

2,80 m

### GRAMATURA

3,10 m<sup>2</sup>



# Blackout 100% linho

**Corttex®**



**02-BEGE**



**09-MARFIM**



**22-PRATA**



**23-BEGE II**

## INFORMAÇÕES

**ORDEM 2932**

### COMPOSIÇÃO

100% Poliéster

### LARGURA

2,80 m

### GRAMATURA

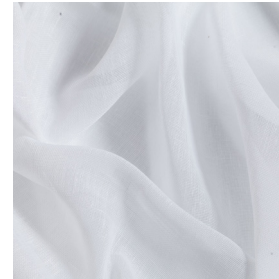
300 m<sup>2</sup>



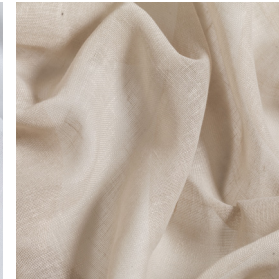
# Voil Flame Especial

ACABAMENTO SOFISTICADO • APARÊNCIA MARCANTE

**Corttex®**



01-BRANCO



02-BEGE



09-MARFIM



22-PRATA

## INFORMAÇÕES

**ORDEM 2934**

**COMPOSIÇÃO**  
100% Poliéster

**LARGURA**  
3,00 m

**GRAMATURA**  
90 m<sup>2</sup>



# Linen Look

ACABAMENTO SOFISTICADO • APARÊNCIA MARCANTE

**Corttex®**



**01-CRÚ**

## INFORMAÇÕES

**ORDEM 2942**

### COMPOSIÇÃO

93,10% Poliéster

6,20% Linho

0,70% Viscose

### LARGURA

3,00 m

### GRAMATURA

130 m<sup>2</sup>



# Linen Look Premium

DESIGN EXCLUSIVO • ACABAMENTO SOFISTICADO

**Corttex®**



**01-CRÚ**

## INFORMAÇÕES

**ORDEM 2943**

### COMPOSIÇÃO

94% Poliéster

6% Linho

### LARGURA

3,00 m

### GRAMATURA

2,40 m<sup>2</sup>



# Linho Especial

ACABAMENTO SOFISTICADO • APARÊNCIA MARCANTE

**Corttex®**



**01-CRÚ**

## INFORMAÇÕES

**ORDEM 2945**

### COMPOSIÇÃO

85,95% Poliéster

14,05% Linho

### LARGURA

3,00 m

### GRAMATURA

1,60 m<sup>2</sup>



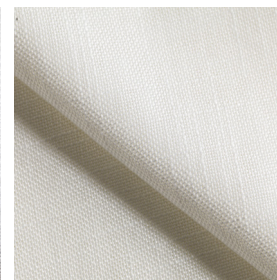
# Flame Super

ACABAMENTO SOFISTICADO • APARÊNCIA MARCANTE

**Corttex®**



**01-BRANCO**



**09-MARFIM**



**22-PRATA**

## INFORMAÇÕES

**ORDEM 2946**

### COMPOSIÇÃO

100% Poliéster

### LARGURA

3,00 m

### GRAMATURA

2,00 m<sup>2</sup>



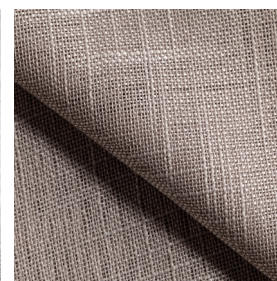
# Flame Especial

DESIGN EXCLUSIVO • ACABAMENTO SOFISTICADO • APARÊNCIA MARCANTE

**Corttex®**



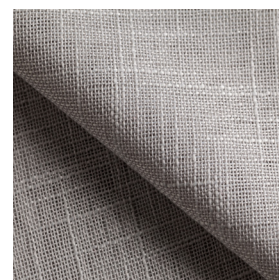
01-BRANCO



02-BEGE



09-MARFIM



22-PRATA



57-CINZA

## INFORMAÇÕES

**ORDEM 2947**

### COMPOSIÇÃO

100% Poliéster

### LARGURA

3,00 m

### GRAMATURA

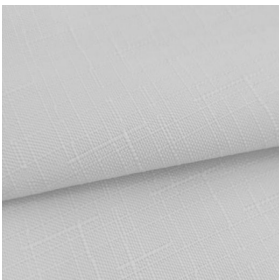
150 m<sup>2</sup>



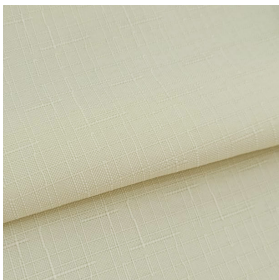
# Oxford Maquinado

ACABAMENTO SOFISTICADO • APARÊNCIA MARCANTE

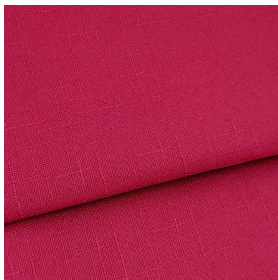
Corttex®



01-BRANCO



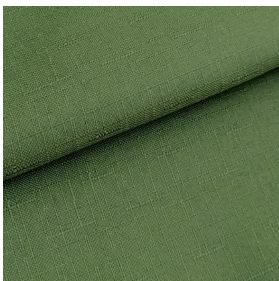
04-PALHA



12-VINHO



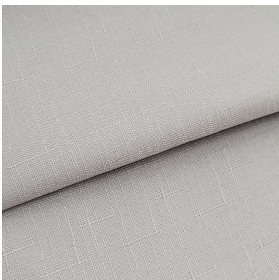
13-MARROM



14-VERDE MUSGO



15-MARINHO



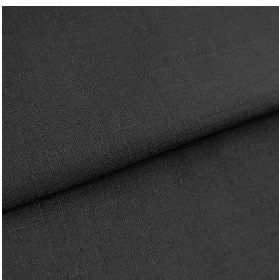
22-PRATA



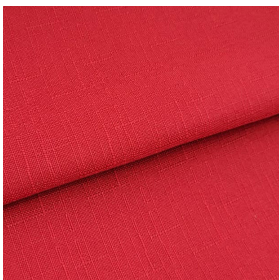
28-PÉROLA



34-ROYAL



45-PRETO



62-VERMELHO



80-ROSA VELHO

## INFORMAÇÕES

**ORDEM 3086**

### COMPOSIÇÃO

100% Poliéster

### LARGURA

3,00 m

### GRAMATURA

140 m<sup>2</sup>



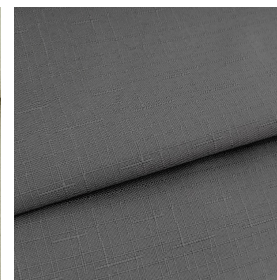
# Oxford Maquinetado

ACABAMENTO SOFISTICADO • APARÊNCIA MARCANTE

**Corttex®**



**87-FENDI**



**96-GRAFITE**

## INFORMAÇÕES

**ORDEM 3086**

### COMPOSIÇÃO

100% Poliéster

### LARGURA

3,00 m

### GRAMATURA

140 m<sup>2</sup>



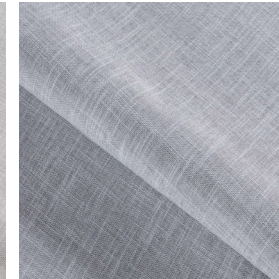
# Linen Look Miami

ACABAMENTO SOFISTICADO • APARÊNCIA MARCANTE

**Corttex®**



**02-BEGE**



**22-PRATA**



**23-BEGE II**

## INFORMAÇÕES

**ORDEM 3117**

**COMPOSIÇÃO**  
100% Poliéster

**LARGURA**  
3,00 m

**GRAMATURA**  
280 m<sup>2</sup>



# Linen Look California

ACABAMENTO SOFISTICADO • APARÊNCIA MARCANTE

**Corttex®**



**02-BEGE**



**22-PRATA**

## INFORMAÇÕES

**ORDEM 3118**

### COMPOSIÇÃO

91,32% Poliéster

8,68%% Linho

### LARGURA

3,00 m

### GRAMATURA

95 m<sup>2</sup>



# Flame New York

ACABAMENTO SOFISTICADO • APARÊNCIA MARCANTE

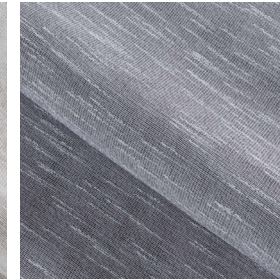
**Corttex®**



**02-BEGE**



**22-PRATA**



**23-BEGE II**

## INFORMAÇÕES

**ORDEM 3119**

### COMPOSIÇÃO

90,74% Poliéster

9,26%% Algodão

### LARGURA

3,00 m

### GRAMATURA

95 m<sup>2</sup>



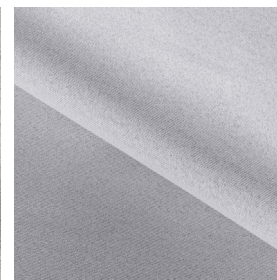
# Blackout DF Chicago

ACABAMENTO SOFISTICADO • APARÊNCIA MARCANTE

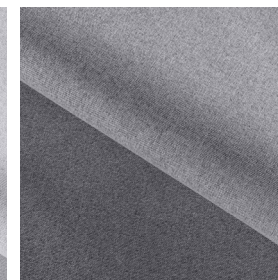
**Corttex®**



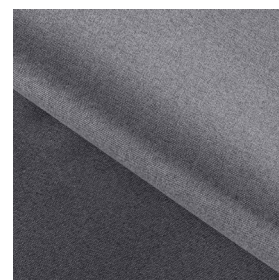
**02-BEGE**



**09-MARFIM**



**22-PRATA**



**57-CINZA**

## INFORMAÇÕES

**ORDEM 3125**

### COMPOSIÇÃO

100% Poliéster

### LARGURA

3,00 m

### GRAMATURA

235 m<sup>2</sup>



# Blackout DF Filadelfia

ACABAMENTO SOFISTICADO • APARÊNCIA MARCANTE

**Corttex®**



02-BEGE



02-BEGE



09-MARFIM



22-PRATA



96-GRAFITE

## INFORMAÇÕES

**ORDEM 3126**

### COMPOSIÇÃO

100% Poliéster

### LARGURA

3,00 m

### GRAMATURA

245 m<sup>2</sup>



# Blackout DF Texas

ACABAMENTO SOFISTICADO • APARÊNCIA MARCANTE

**Corttex®**



02-BEGE



08-TAUPE



09-MARFIM



22-PRATA



96-GRAFITE

## INFORMAÇÕES

**ORDEM 3127**

### COMPOSIÇÃO

100% Poliéster

### LARGURA

3,00 m

### GRAMATURA

260 m<sup>2</sup>



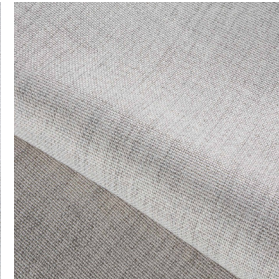
# Linen Look Detroit

ACABAMENTO SOFISTICADO • APARÊNCIA MARCANTE

**Corttex®**



**01-BRANCO**



**2-BEGE**



**22-PRATA**



**35-CRU**

## INFORMAÇÕES

**ORDEM 3157**

**COMPOSIÇÃO**  
100% Poliéster

**LARGURA**  
2,00 m

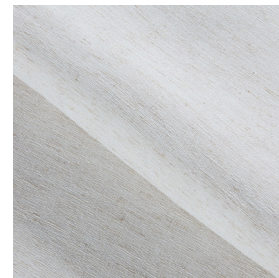
**GRAMATURA**  
300 m<sup>2</sup>



# Linen Look Irlanda

ACABAMENTO SOFISTICADO • APARÊNCIA MARCANTE

**Corttex®**



**35-CRÚ**

## INFORMAÇÕES

**ORDEM 3158**

### COMPOSIÇÃO

97% Poliéster

3% Linho

### LARGURA

3,00 m

### GRAMATURA

200 m<sup>2</sup>



# Semi Blackout Lisboa

ACABAMENTO SOFISTICADO • APARÊNCIA MARCANTE

**Corttex®**



**02-BEGE**



**09-MARFIM**



**22-PRATA**



**96-GRAFITE**

## INFORMAÇÕES

**ORDEM 3159**

### COMPOSIÇÃO

100% Poliéster

### LARGURA

3,00 m

### GRAMATURA

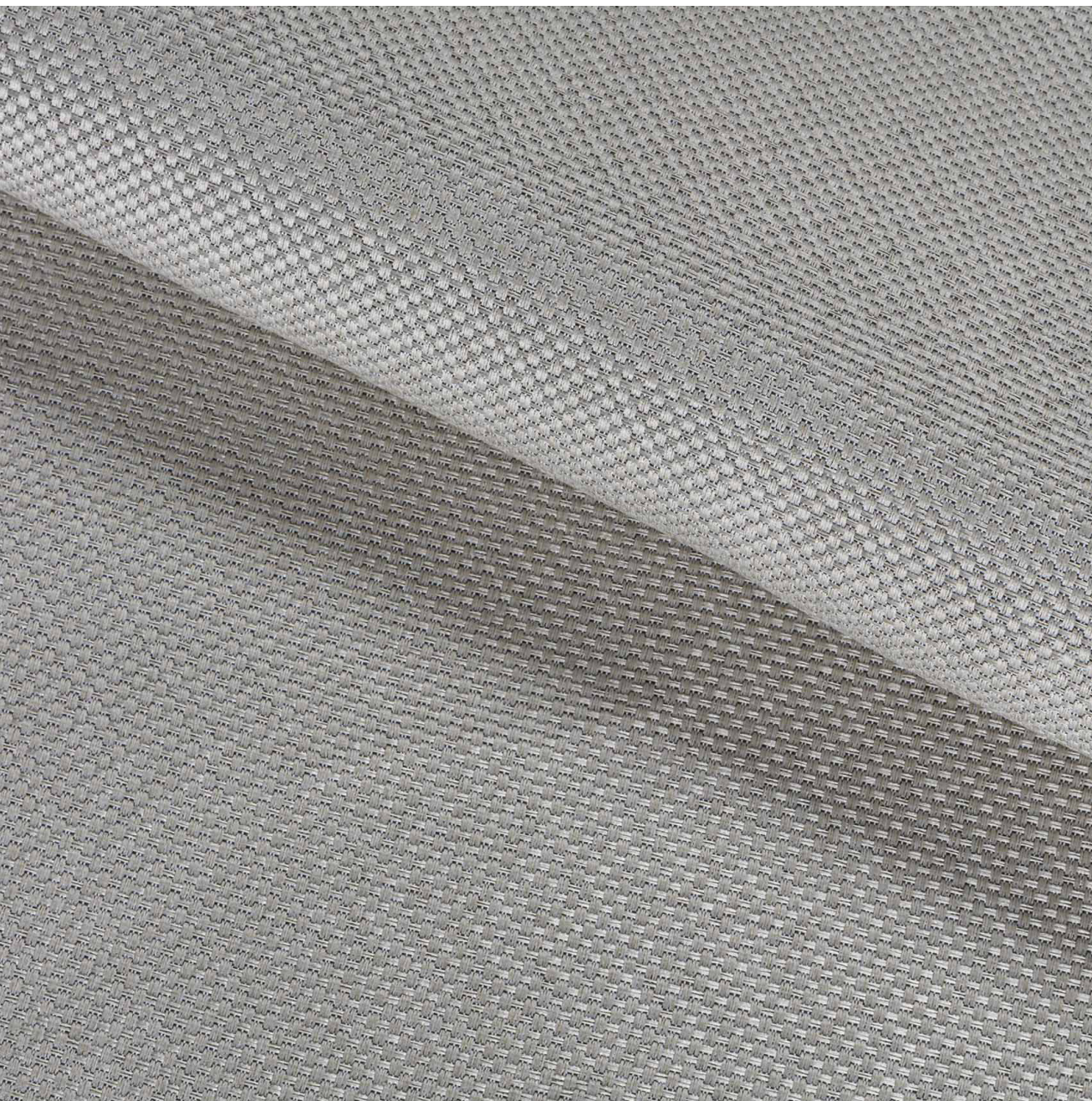
250 m<sup>2</sup>



# Semi Blackout Dubai

ACABAMENTO SOFISTICADO • APARÊNCIA MARCANTE

**Corttex®**



**02-BEGE**



**03-NATURAL**



**72-MARROM**



**96-GRAFITE**

## INFORMAÇÕES

**ORDEM 3160**

### COMPOSIÇÃO

100% Poliéster

### LARGURA

3,00 m

### GRAMATURA

250 m<sup>2</sup>



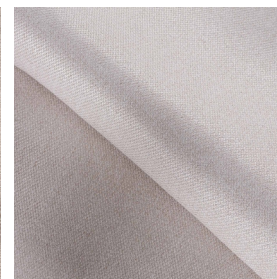
# Semi Blackout Frankfurt

APARÊNCIA MARCANTE

**Corttex®**



**02-BEGE**



**03-NATURAL**



**22-PRATA**



**96-GRAFITE**

## INFORMAÇÕES

**ORDEM 3161**

### COMPOSIÇÃO

100% Poliéster

### LARGURA

3,00 m

### GRAMATURA

300 m<sup>2</sup>



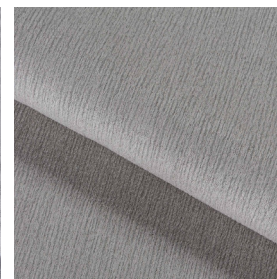
# Semi Blackout Zurique

APARÊNCIA MARCANTE

**Corttex®**



01-BRANCO



02-BEGE



22-PRATA



72-MARROM

## INFORMAÇÕES

**ORDEM 3162**

### COMPOSIÇÃO

100% Poliéster

### LARGURA

2,80 m

### GRAMATURA

345 m<sup>2</sup>



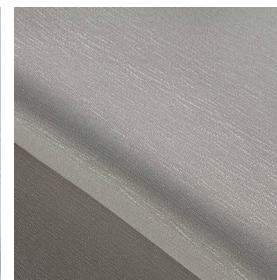
# Granado Dallas

APARÊNCIA MARCANTE

**Corttex®**



01-BRANCO



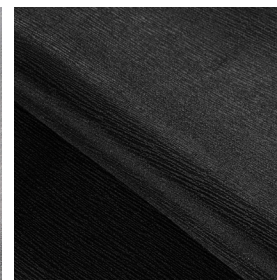
02-BEGE



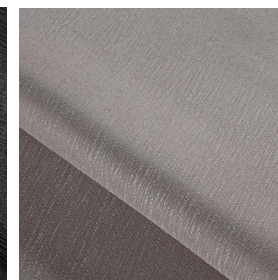
28-PÉROLA



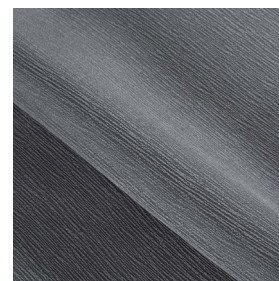
22-PRATA



45-BLACK



87-FENDI



96-GRAFITE

## INFORMAÇÕES

**ORDEM 3170**

### COMPOSIÇÃO

100% Poliéster

### LARGURA

3,00 m

### GRAMATURA

98 m<sup>2</sup>



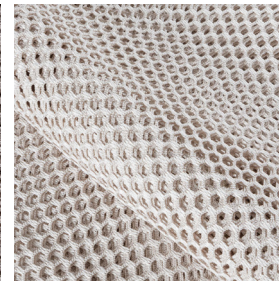
# Tela Cremona

ACABAMENTO SOFISTICADO • APARÊNCIA MARCANTE

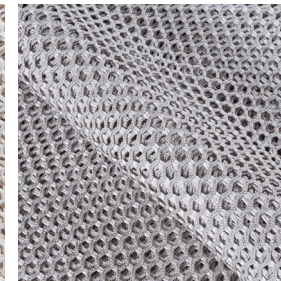
**Corttex®**



02-BEGE



09-MARFIM



22-PRATA

## INFORMAÇÕES

**ORDEM 3192**

### COMPOSIÇÃO

100% Poliéster

### LARGURA

3,00 m

### GRAMATURA

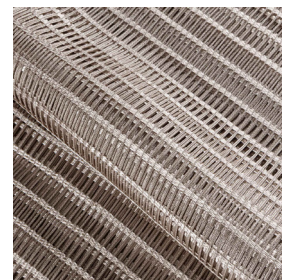
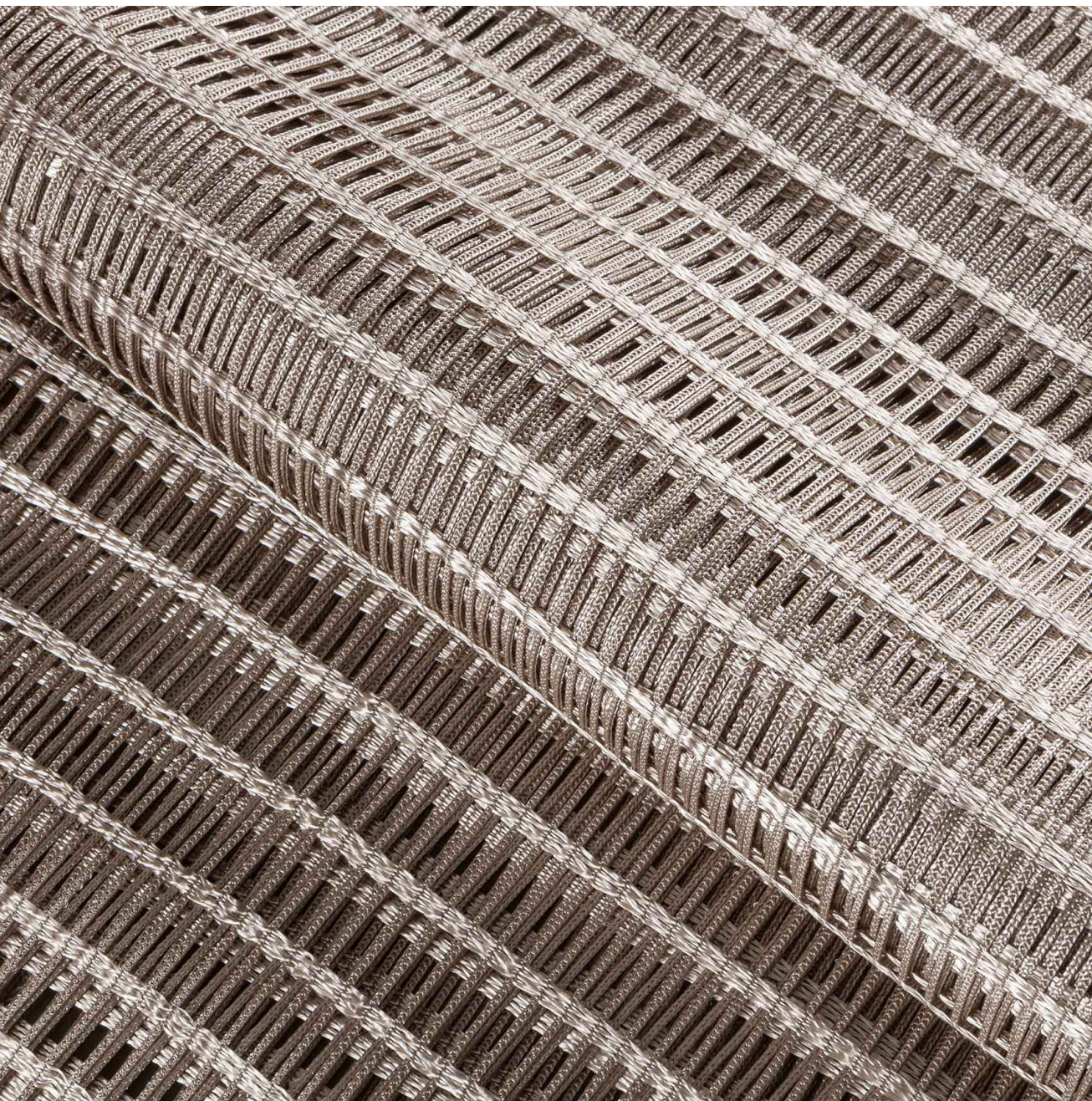
155 m<sup>2</sup>



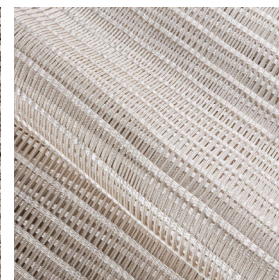
# Tela Ravena

ACABAMENTO SOFISTICADO • APARÊNCIA MARCANTE

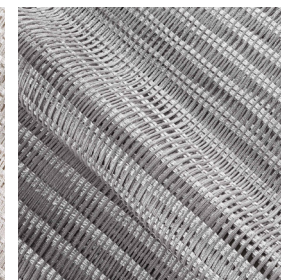
**Corttex®**



02-BEGE



09-MARFIM



22-PRATA

## INFORMAÇÕES

**ORDEM 3193**

### COMPOSIÇÃO

100% Poliéster

### LARGURA

3,00 m

### GRAMATURA

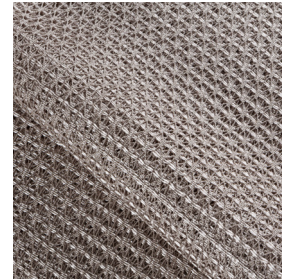
155 m<sup>2</sup>



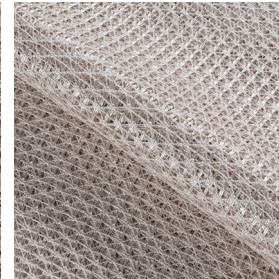
# Tela Vercelli

ACABAMENTO SOFISTICADO • APARÊNCIA MARCANTE

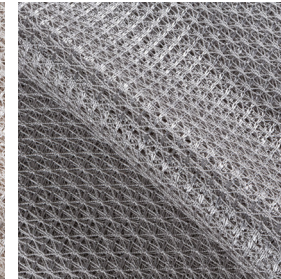
**Corttex®**



02-BEGE



09-MARFIM



22-PRATA

## INFORMAÇÕES

**ORDEM 3194**

**COMPOSIÇÃO**  
100% Poliéster

**LARGURA**  
3,00 m

**GRAMATURA**  
180 m<sup>2</sup>



# Corttex<sup>®</sup>

SUA CASA, SEU ESTILO